

Videospa

'bathtime entertainment'

The ultimate in luxury from Videotree, a fantastic high quality flat screen TV that can be safely fitted into a bathroom.

Treat yourself, have a lovely bubbly soak with your favourite soap. This range of robust water resistant ultra safe low voltage TV's can be safely installed right at the foot of the bath. The water resistant remote control unit can safely be used with wet hands allowing you to simply lie back and enjoy.



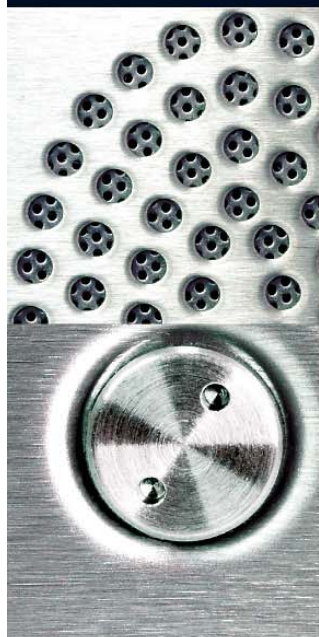
soak with your favourite
soap!

Videospa - Essential bathroom entertainment.

Now available from leading showrooms in a variety of finishes including brushed or polished steel or white enamel.

Manufactured by: Video Tree Ltd
2 Glen Court Canada Road Byfleet Surrey KT14 7JL
www.videotree.com
tel: 01932 351818


Videotree



Videotree



Videospa & Videochef

kitchen & bathroom
entertainment

Technical Overview



The Videospa and Videochef range of ruggedised water resistant TV sets have been created for use within bathrooms and kitchens in homes and luxury hotels.

Manufactured by Videotree Limited in the UK they have a number of features which make them uniquely suited for use within all wet areas.

These include:

- 12 inch high quality NEC industrial specification LCD screen
- Phantom Power - keeping high voltage away from the viewing area
- Single cable delivery of 12 volts power & TV for easy installation
- Integrated water resistant speakers
- Water resistant hand held infrared control
- Videospa features an inbuilt heater to prevent misting in steamy bathrooms

Options

- Interchangeable fascias in a variety of finishes and effects including brushed steel chrome effect and white or natural finishes including stone wood and marble.
- Hardwired wall mounted remote control unit
- Sky channel selection from the bathroom or kitchen
- Interoperability with Hotel Pay for View systems
- Surface mounted or flush fitting

All systems are straight forward to install usually requiring only a single coaxial cable to carry both power and TV signals. The Phantom Power supply unit may be situated up to 80 metres from the viewing location and is typically positioned in the loft, or adjacent to the SKY Digital™ decoder where applicable.

EQUIPMENT SPECIFICATION

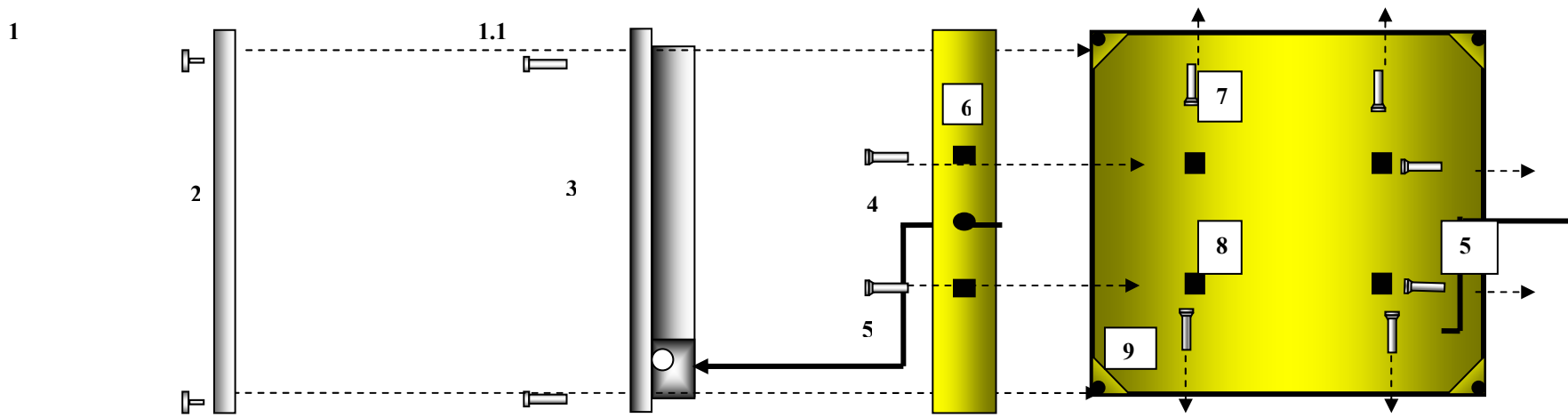
Function	Videospa & Videochef
Overall Dimensions (mm)	484(W) x 330(H) x 65(D)
Backbox Dimensions (mm)	460(W) x 305(H) x 60(D)
Weight Kg	4.6
Display area (mm)	246 (H) x 184.5 (V)
Drive System	a-Si TFT active matrix
Display Colours	262,144 colours
Number of Pixels	800 x 600
Pixel Arrangement	RGB Vertical stripe
Pixel Pitch	0.3075 (H) x 0.3075 (W)
TFT Module Size (mm)	280.0(H)x210.0(V)x 13.0(D)
Contrast Ratio	350:01:00
Viewing Angle	H: 55. V:40 D:50
Supply Voltage	
Backlight	3.3v [5.0v] (logic, LCD Driving)
Backlight	Edge light type, two cold cathode florescent lamps. Replaceable.
Power Consumption	20W
TV Standard	NTSC/PAL/SECAM Multistandard
Audio	2 x 2 Watts
Input Signal	RF/UHF Composite Video and Stereo Audio
Input Connector	Coaxial, 3 x phono.
RF Selection	Tuning
On Screen Graphics	Selectable via handset
Certificates	Low Voltage Directive 73/23/EEC
Colour/Finish	Brushed Steel, Polished Steel, White Enamel. Others on application
Heater Unit	6W
User Control	Power on/off
SKY Digital Slave	Yes
Phantom Power Unit	
Dimensions mm	82(W) x 55(H)x 24(D)
Power input/output	12V
Power input Connector	2.5mm jack
RF Singal Input	F Type Connector
RF/Power output	F Type Connector
Transmission distance	RF & Power 12V - 80m
Power Supply Unit	
Input Voltage	90-264VAC
Current	1.2Arms Max.
Frequency	47-63 Hz
Output Voltage	12V
Output Connector	F Type Connector
Remote Control	
Dimesions (mm)	61(w) 157(L) x 22(D)
Power	2x AA Batteries
Control Functions	Standby, Volume, Brightness, Channel up/down, contrast, Channel Programming. Learning/user definable keys.

Manufactured by:

Videotree Limited
 2 Glen Court
 Canada Road
 Byfleet
 Surrey
 KT14 7JL
 Tel 01932 351818
www.videotree.com

Due to continuous development the manufacturer reserves the right to change specification without notice



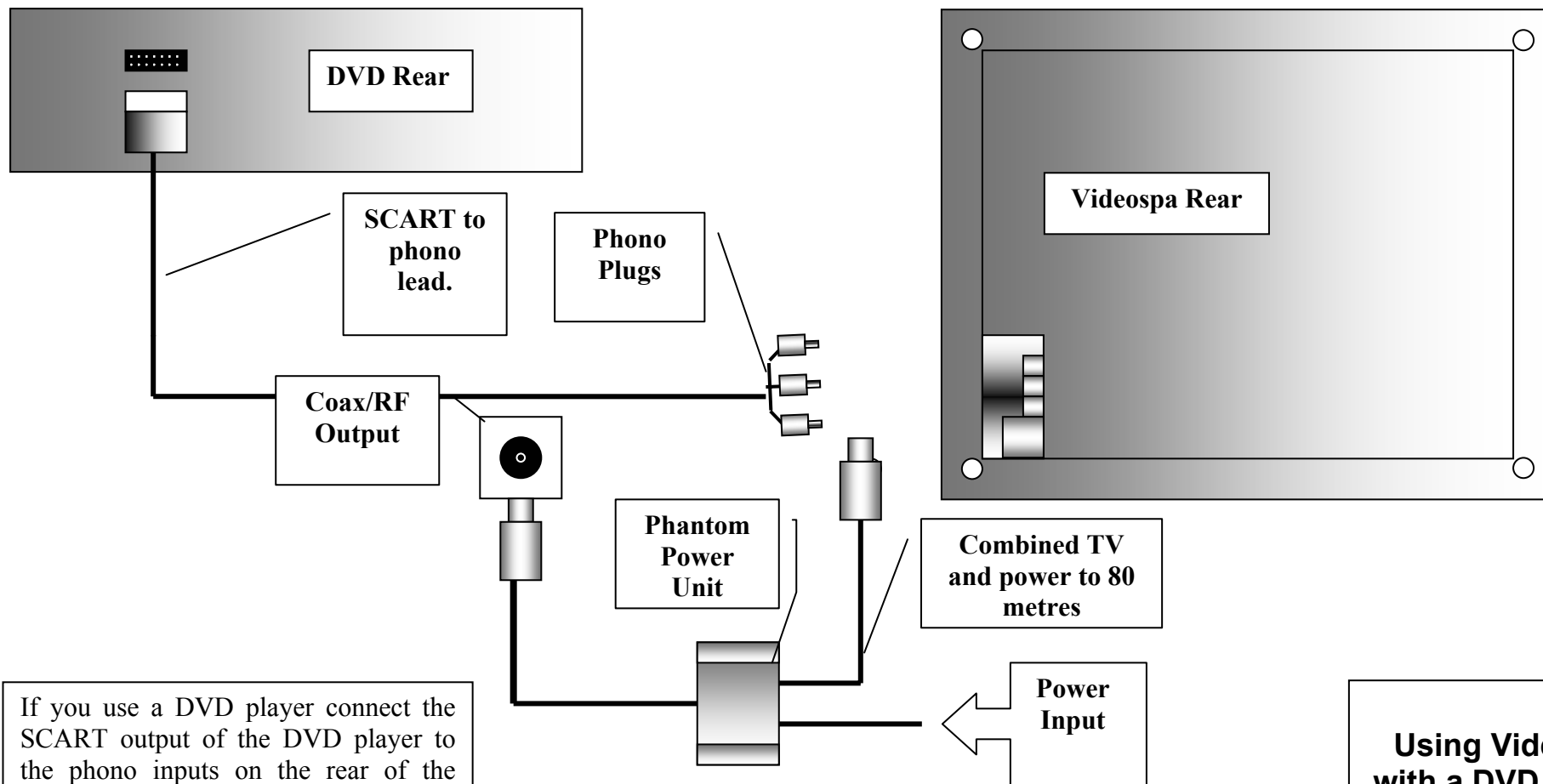


- Key**
- 1 Front panel screws
 - 1.1 Hexagon screws
 - 2 Front panel
 - 3 System unit
 - 4 Rear mounting screws
 - 5 Aerial & power input cable
 - 6 Side mounting holes
 - 7 Side mounting screws
 - 8 Rear mounting holes
 - 9 Front panel screw mount

Mechanical Installation Schematic

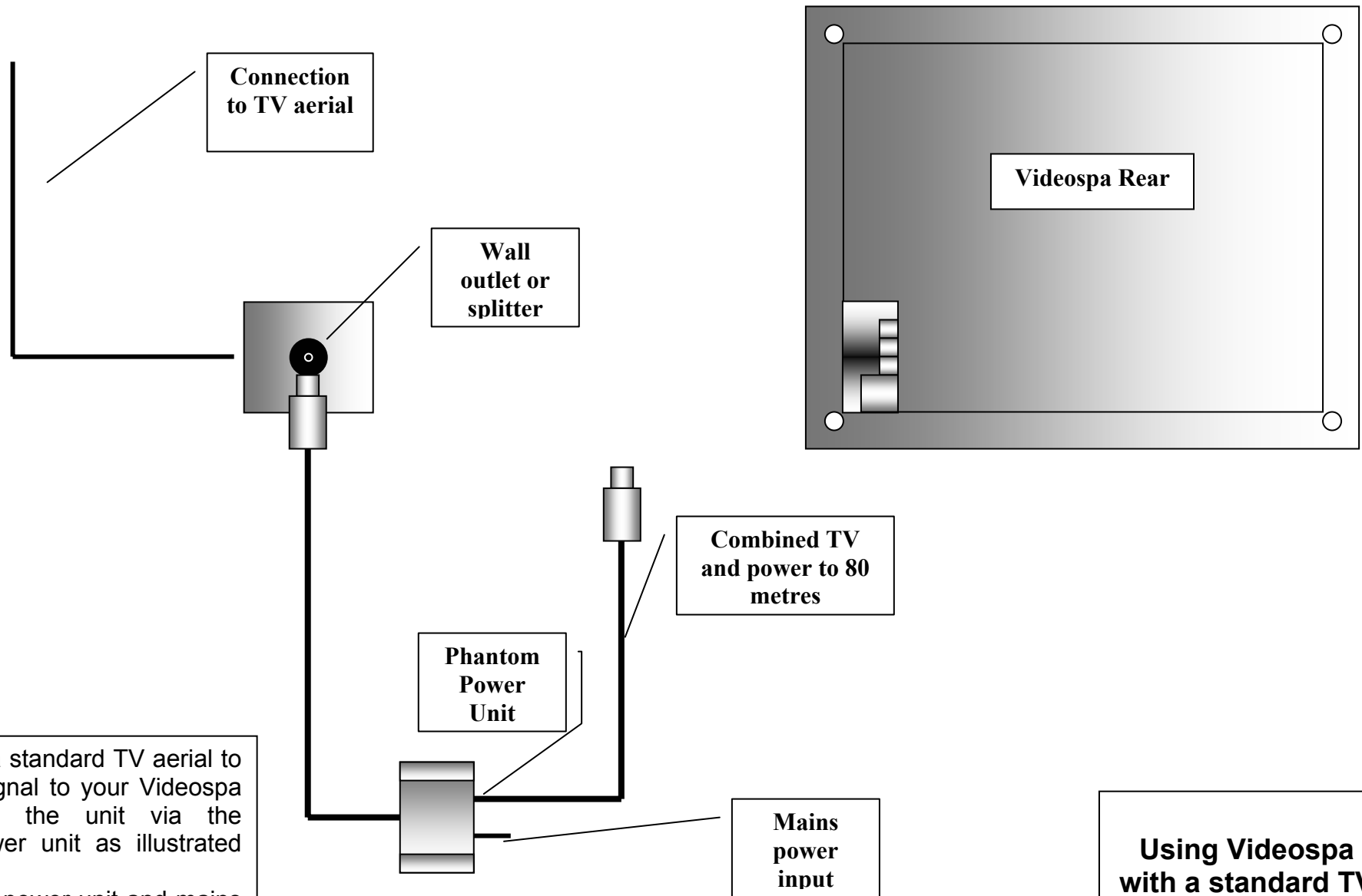
- Key**
- 1. Front Panel
 - 2 Electronics system unit (front)
 - 3 Electronics system unit (rear)
 - 4 Back box (front)

Subsystem schematic



If you use a DVD player connect the SCART output of the DVD player to the phono inputs on the rear of the video spa unit using the appropriate cable. The phantom power unit should be connected to the TV Aerial and mains power adapter.

Using Videospa with a DVD Player. Via SCART



Connection to TV aerial

Wall outlet or splitter

Videospa Rear

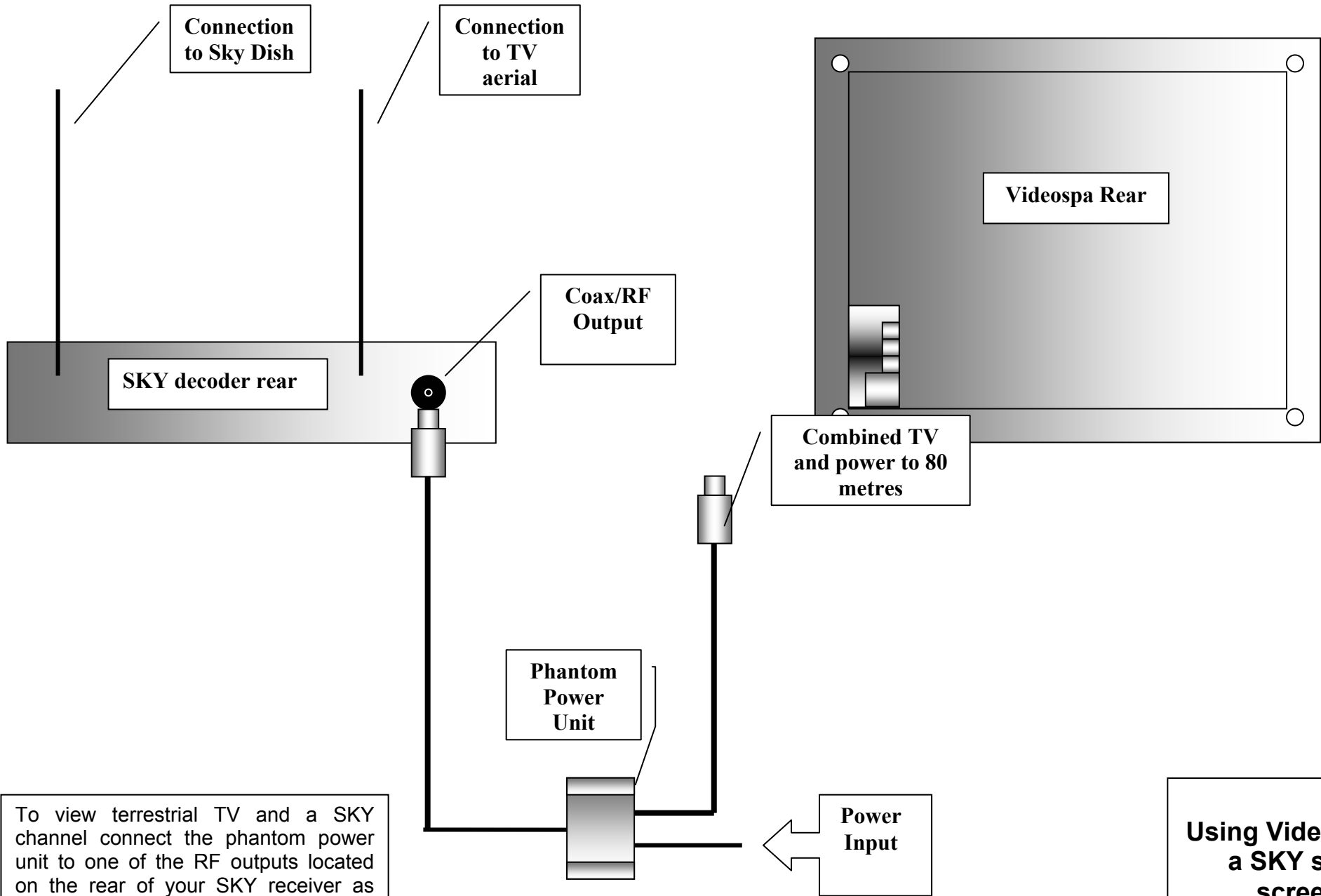
Combined TV and power to 80 metres

Phantom Power Unit

Mains power input

When using a standard TV aerial to supply the signal to your Videospa unit connect the unit via the phantom power unit as illustrated below. The phantom power unit and mains adapter should be located in a dry area well away from the bathroom in either the loft or other convenient

Using Videospa with a standard TV Aerial



Connection to Sky Dish

Connection to TV aerial

SKY decoder rear

Coax/RF Output

Videospa Rear

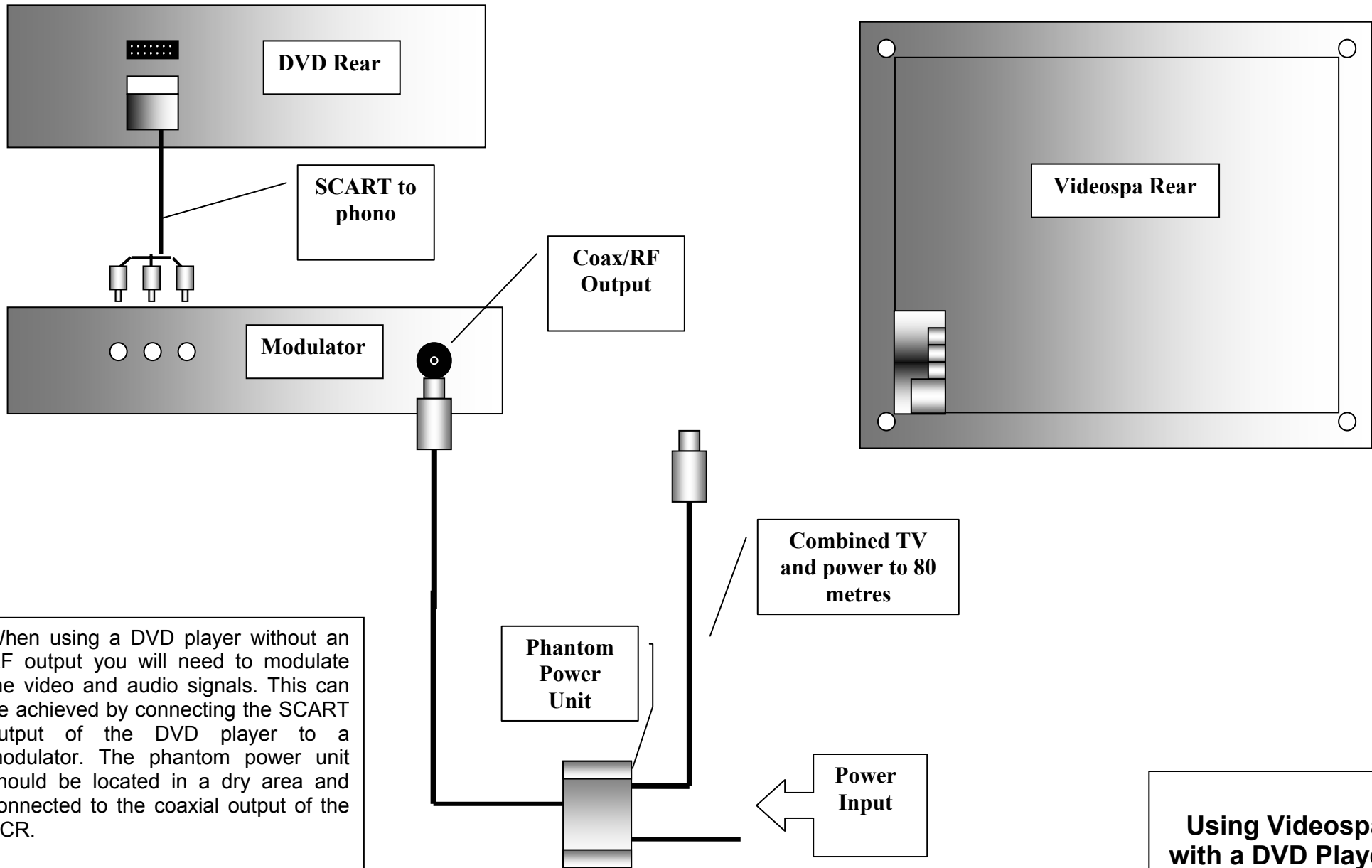
Combined TV and power to 80 metres

Phantom Power Unit

Power Input

To view terrestrial TV and a SKY channel connect the phantom power unit to one of the RF outputs located on the rear of your SKY receiver as shown in the schematic.

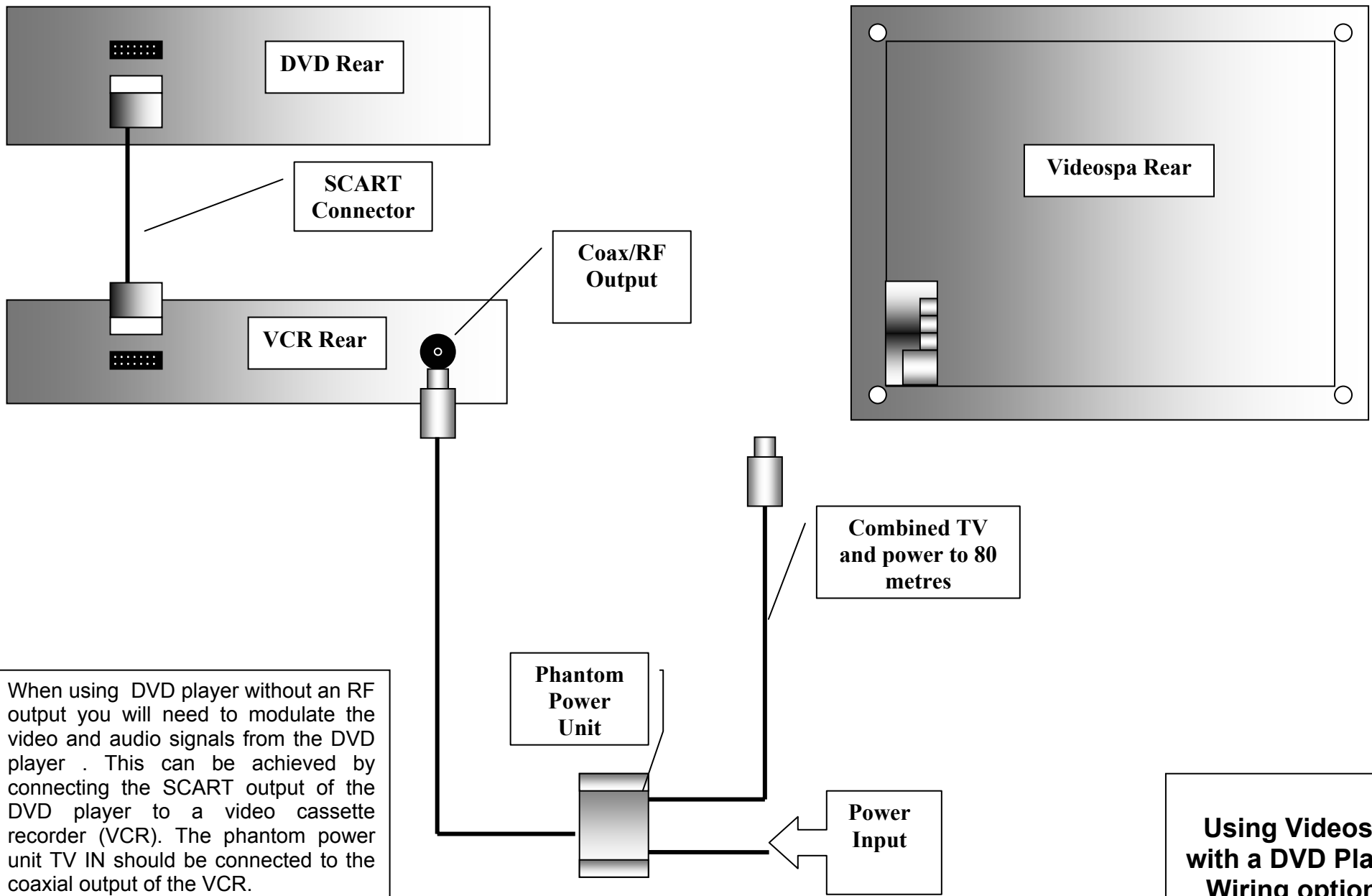
Using Videospa as a SKY slave screen.



When using a DVD player without an RF output you will need to modulate the video and audio signals. This can be achieved by connecting the SCART output of the DVD player to a modulator. The phantom power unit should be located in a dry area and connected to the coaxial output of the VCR.

Illustration shows a modulator with phono inputs, a modulator with SCART input may be used

Using Videospa with a DVD Player. Wiring option 1



When using DVD player without an RF output you will need to modulate the video and audio signals from the DVD player . This can be achieved by connecting the SCART output of the DVD player to a video cassette recorder (VCR). The phantom power unit TV IN should be connected to the coaxial output of the VCR.

Using Videospa with a DVD Player. Wiring option 2